

[www.fyindustries.com.pk](http://www.fyindustries.com.pk)

# STAINLESS STEEL WIRE MESH



**FY Industries  
(Pvt) Limited**

# General Specification

## Wire Materials

- Stainless steels of 304, 304L, 316, 316L, 321, 310, 310S
- Duplex stainless steel 2205, super duplex stainless steel 2507
- Other metal alloy 904L, C22, C276, Monel 400, etc.

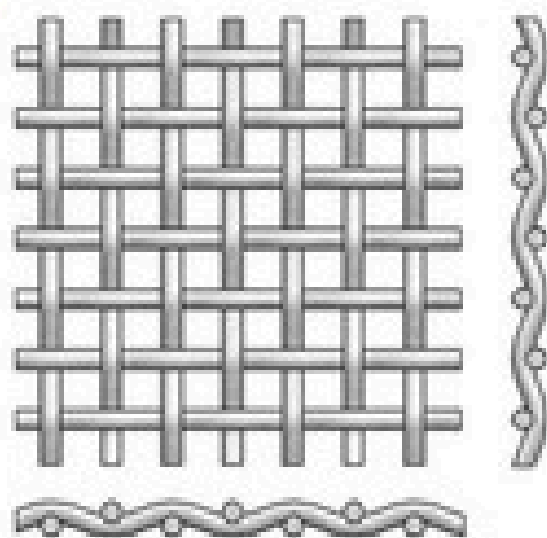
Mesh size: 1–2800 mesh

Wire diameter:  $\geq 0.02$  mm

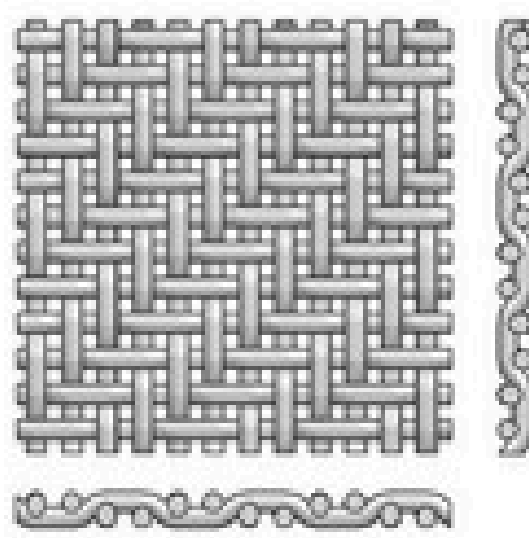
Width: some specifications can reach to 6 m

## Typical Weaving Patterns

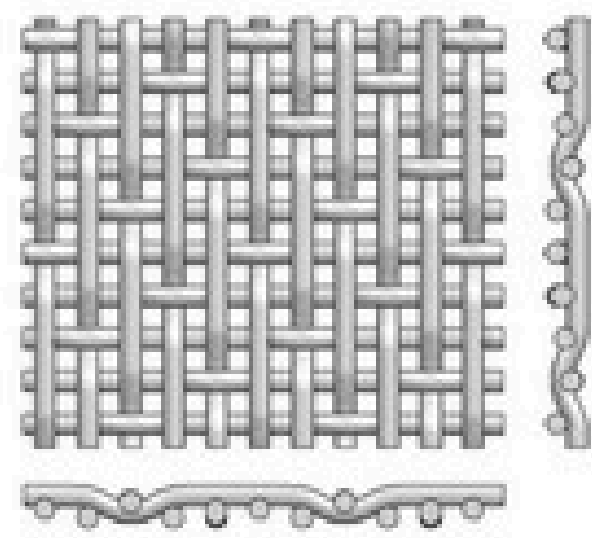
plain weave, twill weave, plain dutch weave, twilled dutch weave, reverse dutch weave, five-heddle weave.



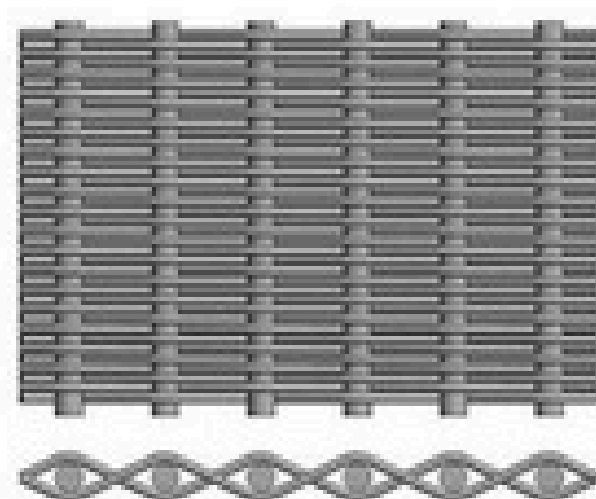
PLAIN WEAVING



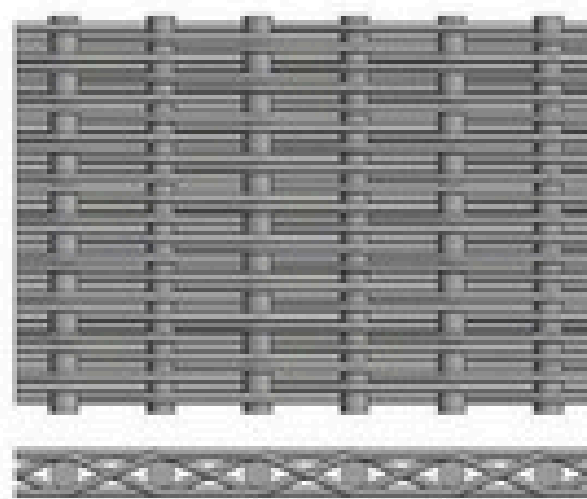
TWILL WEAVING



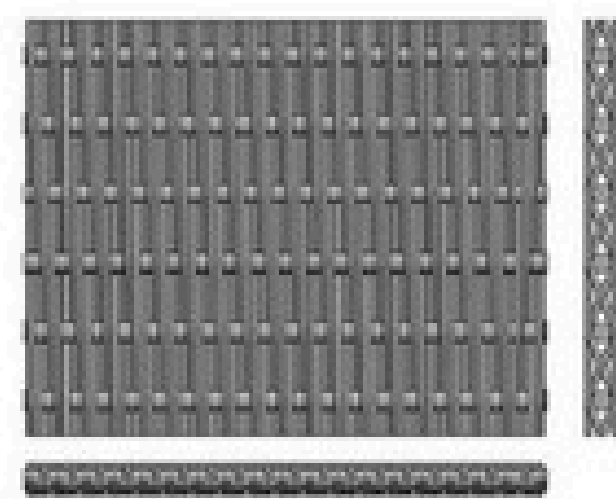
FIVE SHED TWILL WEAVING



Plain Dutch Weave



Dutch Twilled Weave



Reverse Dutch(Twilled) Weave

## Plain Weave & Twill Plain Weave Stainless Steel Wire Mesh

Plain Weave and Twill Plain Weave Stainless Steel Wire Mesh is also called square hole wire cloth, mesh rang from 1 mesh to 635 mesh, wire diameter from 0.02 mm to 4 mm. Most of the following common used specification are in stock, welcome your enquiry.

### Stainless Steel Wire Plain Weave& Twill Weave Specification

Mesh	Wire Dia. (mm)	Opening (mm)	Material (AISI)
1 x 1	2.000	23.370	304 or 316
2 x 2	1.600	11.100	304 or 316
3 x 3	1.370	7.090	304 or 316
4 x 4	1.600	4.750	304 or 316
4 x 4	1.190	5.160	304 or 316
5 x 5	1.000	4.040	304 or 316
6 x 6	0.890	3.350	304 or 316
8 x 8	0.710	2.460	304 or 316
10 x 10	0.640	1.910	304 or 316
12 x 12	0.580	1.520	304 or 316
12 x 12	0.500	1.600	304 or 316
14 x 14	0.230	1.220	304 or 316
14 x 14	0.500	1.300	304 or 316
16 x 16	0.450	1.130	304 or 316
18 x 18	0.430	0.980	304 or 316
20 x 20	0.400	0.870	304 or 316
24 x 24	0.350	0.700	304 or 316
30 x 30	0.330	0.520	304 or 316
30 x 30	0.300	0.540	304 or 316
30 x 30	0.230	0.620	304 or 316
35 x 35	0.280	0.450	304 or 316
40 x 40	0.250	0.380	304 or 316
40 x 40	0.230	0.400	304 or 316

Mesh	Wire Dia. (mm)	Opening (mm)	Material (AISI)
50 x 50	0.230	0.280	304 or 316
50 x 50	0.200	0.310	304 or 316
60 x 60	0.180	0.230	304 or 316
60 x 60	0.180	0.250	304 or 316
70 x 70	0.165	0.200	304 or 316
70 x 70	0.120	0.240	304 or 316
80 x 80	0.165	0.200	304 or 316
80 x 80	0.140	0.150	304 or 316
90 x 90	0.120	0.160	304 or 316
100 x 100	0.110	0.140	304 or 316
100 x 100	0.100	0.150	304 or 316
100 x 100	0.090	0.170	304 or 316
120 x 120	0.090	0.120	304 or 316
150 x 150	0.063	0.110	304 or 316
180 x 180	0.053	0.090	304 or 316
200 x 200	0.053	0.070	304 or 316
250 x 250	0.040	0.063	316
300 x 300	0.040	0.044	316
325 x 325	0.035	0.043	316L
350 x 350	0.030	0.042	316L
400 x 400	0.030	0.033	316L
450 x 450	0.028	0.028	316L
500 x 500	0.025	0.026	316L
635 x 635	0.020	0.020	316L

## Plain Dutch Weave Wire Mesh

Plain Dutch Weave can accommodate high flowrates with a relatively low pressure drop. They are woven with each warp and weft wire passing over and under one wire. The weft wires are smaller in diameter than the warp wires and are drawn up close together, creating a dense filtration weave.

### Plain Dutch Weave Filter Cloth Specification

Mesh	Wire Dia. (MM)	Normal Opening (µm)	Material (AISI)
7 x 44	0.71 x 0.63	315	304 or 316
8 x 60	0.63 x 0.45	300	304 or 316
14 x 88	0.50 x 0.33	200	304, 316 or steel
22 x 64	0.58 x 0.40	280	304, 316 or steel
24 x 110	0.36 x 0.25	150	304, 316 or steel
30 x 150	0.23 x 0.18	100	304, 316 or steel
40 x 200	0.18 x 0.13	80	304 or 316
50 x 250	0.14 x 0.11	60	304 or 316
80 x 400	0.10 x 0.065	40	304 or 316
78 x 700	0.11 x 0.08	30	304 or 316

## Twill Dutch Weave Wire Mesh

The term "Twill" indicates the warp and weft wires pass alternately over two and under two wires. The term "Dutch" refers to the use of a heavier warp wire in conjunction with a lighter weft wire. In a Twill Dutch Weave the weft wires are drawn up so tightly that there is always a weft wire above and below the warp wires, creating a weave with the warp wires completely covered. The flow-pass geometry is extremely tortuous, allowing reasonable flow rates while insuring excellent particle size retention.

### Twill Dutch Weave Filter Cloth Specification

Mesh	Wire Dia. (mm)	Normal Opening (µm)	Material (AISI)
80 x 700	0.110 x 0.080	30	304, 316, 316L
165 x 800	0.070 x 0.050	20	304, 316, 316L
165 x 1400	0.063 x 0.040	15	304, 316, 316L
200 x 600	0.050 x 0.032	10	304, 316, 316L
200 x 1400	0.050 x 0.032	10	304, 316, 316L
250 x 1600	0.050 x 0.032	8	304, 316, 316L
280 x 2200	0.050 x 0.032	7	304, 316, 316L
300 x 2100	0.036 x 0.025	6	316L
325 x 2300	0.035 x 0.025	4	316L
400 x 2800	0.030 x 0.018	3	316L

## Reverse Dutch Weave Wire Cloth

Reverse Dutch Weave Wire Cloth is one of special weave wire cloth used in the filtration field of plastic industry, chemical industry, etc. Comparing with the normal Plain Dutch weave mesh, the coarser wire in the weft direction and the finer wire in the warp direction, this weave can supply better filtration rate.

### Reverse Dutch Weave Wire Cloth Specification

Mesh	Wire Dia. (mm)	Material (AISI)
75 × 15	0.45 × 0.50	304, 316, 316L
120 × 15	0.35 × 0.50	304, 316, 316L
132 × 17	0.32 × 0.45	304, 316, 316L
150 × 18	0.30 × 0.45	304, 316, 316L
152 × 24	0.28 × 0.40	304, 316, 316L
160 × 18	0.27 × 0.45	304, 316, 316L
180 × 18	0.26 × 0.45	304, 316, 316L
200 × 40	0.17 × 0.27	304, 316, 316L
260 × 40	0.15 × 0.27	304, 316, 316L
300 × 40	0.14 × 0.25	304, 316, 316L

## General Industrial Uses

Stainless steel wire mesh, with its excellent resistance against acid, alkali, heat and corrosion, find extensive uses in processing of oils, chemicals, food, pharmaceuticals, also sorting and screening of solid, liquid and gas in mine, metallurgy, aerospace, machine making, etc.





**FY Industries  
(Pvt) Limited**



**[www.fyindustries.com.pk](http://www.fyindustries.com.pk)**



**[info@fyindustries.com.pk](mailto:info@fyindustries.com.pk)**